



Alexis Fernal de la Lanza

ULALUME — A BALLAD

The skies they were ashen and sober ;
The leaves they were crispéd and sere —
The leaves they were withering and seré

It was night, in the lonesome October
Of my most immemorial year :



4
One thing
have I desired
of the LORD, that will
I seek after; that I may dwell
in the house of the LORD all the
days of my life, to behold the beauty of
the LORD, and to enquire in his temple. 5 For
in the time of trouble he shall hide me in his pavil-
ion: in the secret of his tabernacle shall he hide me.

LOREN B. BROWN

painting and drawing, senior BFA show

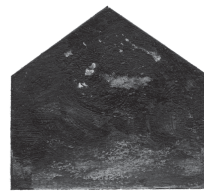
GALLERY 303

HOURS:
monday—

9 to 5
friday

telephone:

801.422.2881



on display

NOVEMBER

14–28

2005 at the

HARRIS

FINE ARTS

CENTER

SANCTUARIES: TEMPLE & HOUSE

“What art offers is space—a certain breathing room for the spirit.”

JOHN UPDIKE



JUICETREE | JUICE CAFÉ



juícetree



juicetree

ADDRESS:
10600 S. 1300 E.
SANDY, UT
84092

PHONE:
227.6240
FAX:
227.6242



Christopher Chase
10600 S. 1300 E.
SANDY, UT
84092
PHONE: **227.5914** FAX: **227.6242**
cchase@juicetree.com
general manager



Mary Thomasson
10600 S. 1300 E.
SANDY, UT
84092
PHONE: **227.6240** FAX: **227.6242**
mthomasson@juicetree.com
assistant manager

also visit www.juicetree.com



juicetree

ADDRESS:
10600 S. 1300 E.
SANDY, UT
84092

TAKE A BREAK FROM RAKING AND TRY OUR

fall flavors

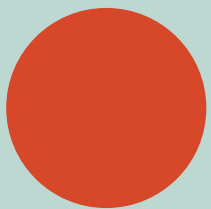


orange-carrot serenity blend
hot cranberry cider
tangerine chi booster
spiced pumpkin chai
apples-n-berries harvest blend
peach meditation
hazelnut cocoa
tao trail mix

juicetree

happy holidays

COME CELEBRATE THE SEASON WITH OUR FESTIVE FLAVORS



iced eggnog
mint hot chocolate
orange & lemon wassail
cinnamon chai
french vanilla steamer

juicetree

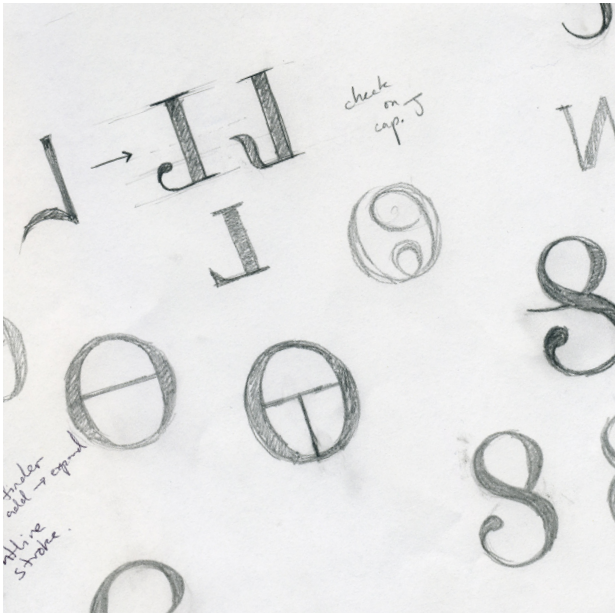
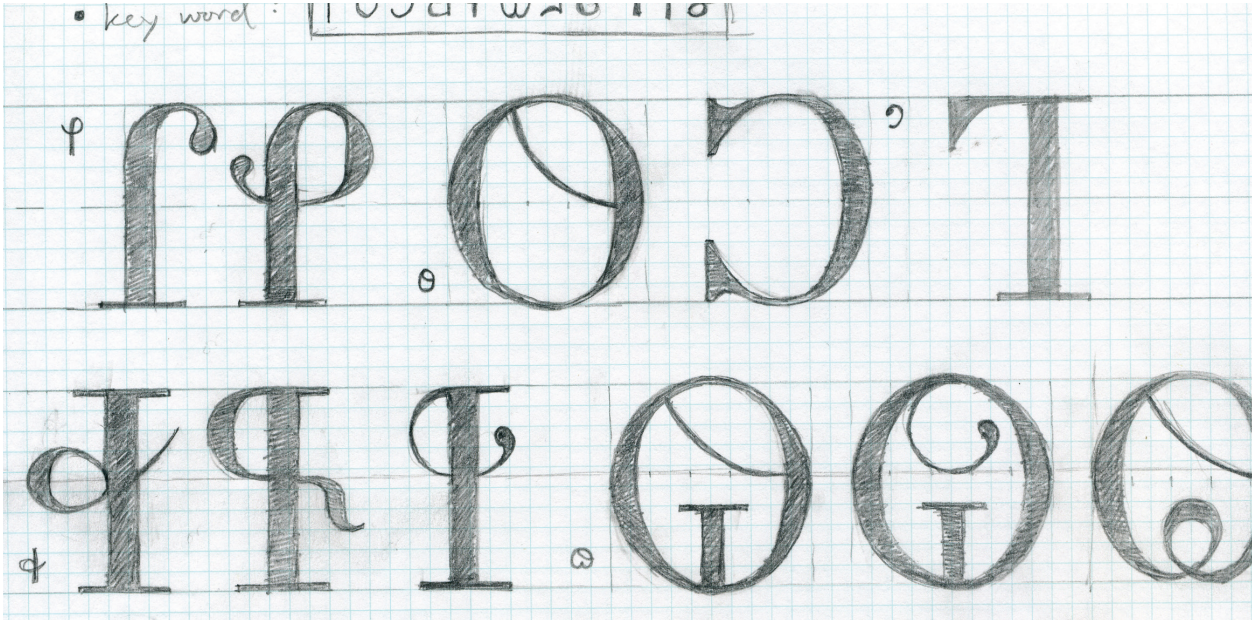
spring forward

BRIGHTEN YOUR DAY WITH ONE OF OUR NEW ENERGY BLENDS



lime squeeze
three citrus morning starter
mango-strawberry mixer
apricot nectar
wheatgrass karma boost
old-fashioned lemonade
carrott juice with green tea extract

juicetree



72 pt

P O B F O I O T M S
f ö d e ö j e l n s

48 pt

P O B F O I O T M S
f ö d e ö j e l n s

24 pt

P O B F O I O T M S
f ö d e ö j e l n s

16 pt

P O B F O I O T M S
f ö d e ö j e l n s

12 pt

P O B F O I O T M S
f ö d e ö j e l n s

INTERSTATE

Enter here ›

Simple, sturdy, still legible at 80 mph. Interstate is a large, sans serif family designed in 1993 by the talented young designer Tobias Frere-Jones (he was only 23 at the time). It is based loosely on the lettering found on road signs—the font family known as Highway Gothic used by the United States Federal Highway Administration. It can be classified as a grotesque sans serif typeface, which are distinguished by their slight variation in height to width proportion of the capital letters and rounded letters that tend to be elliptical rather than circular.

Interstate's greatest feature is its easy legibility, even at small point sizes. Font Bureau—the foundry Frere-Jones was associated with at the time of Interstate's release—attributes this not only to its large x-height and simple, open forms, but to its familiarity. This is a fair assumption, considering its predecessor, Highway Gothic, is seen by U.S. drivers on a daily basis.

Interstate's urban origin shows Frere-Jones's interest in vernacular lettering, or "working class lettering" as he calls it. A resident of New York, Frere-Jones has also designed the typefaces Garage Gothic, based on parking garage tickets; Pilsner, based on a French beer label; and Gotham, based on unassuming signs found on building facades.

Very popular in its day, Interstate was used for most everything, including the 2000 U.S. Census. Recently, with the help of Cyrus Highsmith, Frere-Jones has expanded Interstate into a versatile family of 40 fonts with 3 widths and 7 different weights.



14 pt Interstate Light Compressed
Interstate Light Condensed
Interstate Light

14 pt Interstate Regular Compressed
Interstate Regular Condensed

» 24 pt Interstate Regular: 1234567890

14 pt Interstate Bold Compressed
Interstate Bold Condensed
Interstate Bold

14 pt Interstate Black Compressed
Interstate Black Condensed
Interstate Black

ABCDEFGHIJKLM
NOPQRSTUVWXYZ
XYZ

abcdefghijklmno
pqrstuvwxyz

» Go on. Take it for a test drive.

The origins of the Interstate System go back to studies in the late 1930s and early 1940s. Section 7 of the Federal-Aid Highway Act of 1944 authorized designation of a 65,000-kilometer (40,000-mile) "National System of Interstate Highways." Within that original mileage limitation, the routes were designated in 1947 and 1955, but in the absence of a national program and a Federal commitment to build the roadways, little was accomplished.

In 1956 the pieces finally fell into place. Although the Federal-Aid Highway Act of 1956 contained many provisions affecting the Interstate System, the key legislative phrase in section 108 is breathtakingly simple and direct: "It is hereby declared to be essential to the national interest to provide for the early completion of the 'National System of Interstate Highways,' as authorized and designated in accordance with section 7 of the Federal-Aid Highway Act of 1944."

– excerpt from "The Year of the Interstate"
by Richard F. Weingroff

I.D.

DESIGNER
Tobias Frere-Jones

CONSTRUCTED
1993-1994

CLASSIFICATION
grotesque sans serif

If you're leaving you'll want to take this exit ›